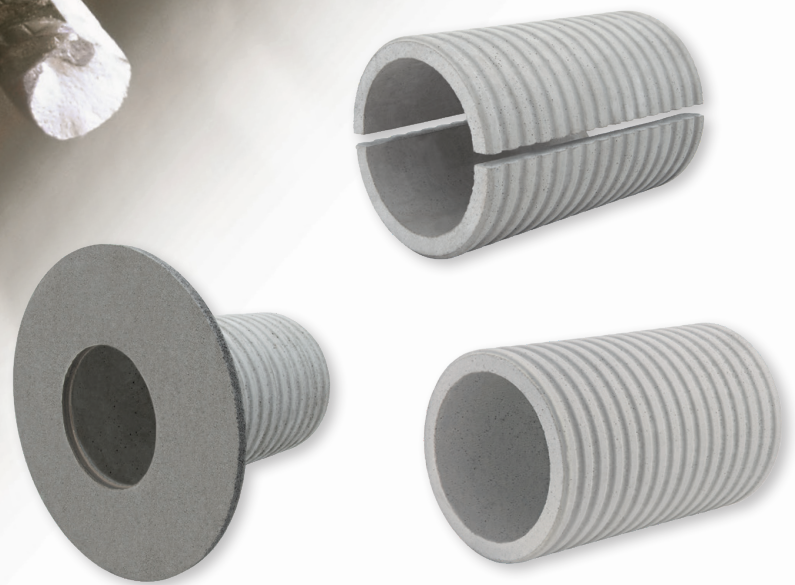




# MASTERTEC

SPECIAL ARTICLES FOR REINFORCED CONCRETE CONSTRUCTION



## FASO LINING PIPES

PRODUCT RANGE

PRODUCT GROUP 4

2024/2025

# FASO Lining pipes



## Fibre cement lining pipe for insertion of pipes and cables

- Tested against pressurised and non-pressurised water in accordance with the WU Guideline
- The corrugated exterior ensures a homogeneous and water-impermeable bond with the concrete
- Diameters DN 50 to DN 800 available ex stock
- Suitable for MASTERTEC gasket inserts and modular seals as well as all brands on the market



### Special lengths

- Any intermediate lengths can be supplied – we charge the price of the next higher stock length.
- DN 50 to DN 800 can be extended up to 1600 m.
- DN 50 to DN 400 available with closure plugs – please list in your order.
- We will inform you whether shipment is effected by forwarder or parcel service.

FASO inner Ø mm	outer Ø mm	Standard lengths												Closure plugs – please list in your order
		200 mm	240 mm	250 mm	300 mm	350 mm	365 mm	400 mm	500 mm	600 mm	800 mm	1000 mm	1200 mm	
DN 50 Weight/pc.	90	080020 1.82 kg	080021 2.18 kg	080022 2.27 kg	080023 2.73 kg	080024 3.18 kg	080025 3.32 kg	080026 3.64 kg	080027 4.55 kg	080028 5.46 kg	080029 7.27 kg	080030 9.09 kg	080031 11.36 kg	
DN 80 Weight/pc.	120	080210 2.58 kg	080211 3.09 kg	080212 3.22 kg	080213 3.86 kg	080214 4.51 kg	080215 4.70 kg	080216 5.15 kg	080217 6.44 kg	080218 7.73 kg	080918 10.30 kg	080950 12.88 kg	080219 16.10 kg	
DN 100 Weight/pc.	140	080220 3.39 kg	080221 4.07 kg	080222 4.24 kg	080223 5.09 kg	080224 5.94 kg	080225 6.19 kg	080226 6.78 kg	080227 8.48 kg	080228 10.18 kg	080921 13.33 kg	080952 16.96 kg	080229 21.20 kg	
DN 125 Weight/pc.	165	080230 3.81 kg	080231 4.57 kg	080232 4.76 kg	080233 5.71 kg	080234 6.66 kg	080235 6.95 kg	080236 7.62 kg	080237 9.52 kg	080238 11.42 kg	080922 14.45 kg	080954 19.04 kg	080239 23.8 kg	
DN 150 Weight/pc.	190	080240 4.32 kg	080241 5.18 kg	080242 5.40 kg	080243 6.48 kg	080244 7.56 kg	080245 7.88 kg	080246 8.64 kg	080247 10.80 kg	080248 12.96 kg	080924 17.27 kg	080956 21.59 kg	080249 26.99 kg	
DN 200 Weight/pc.	250	080250 7.18 kg	080251 8.62 kg	080252 8.98 kg	080253 10.78 kg	080254 12.57 kg	080255 13.11 kg	080256 14.37 kg	080257 17.96 kg	080258 21.55 kg	080926 28.74 kg	080958 35.92 kg	080259 44.90 kg	
DN 250 Weight/pc.	300	080260 8.94 kg	080261 10.73 kg	080262 11.17 kg	080263 13.41 kg	080264 15.64 kg	080265 16.31 kg	080266 17.88 kg	080267 22.35 kg	080268 26.82 kg	080928 35.76 kg	080960 44.70 kg	080269 55.87 kg	
DN 300 Weight/pc.	350	080270 10.07 kg	080271 12.09 kg	080272 12.59 kg	080273 15.11 kg	080274 17.63 kg	080275 18.38 kg	080276 20.14 kg	080277 25.18 kg	080278 30.22 kg	080930 40.29 kg	080962 50.36 kg	080279 62.95 kg	
DN 350 Weight/pc.	400	080280 11.59 kg	080281 13.91 kg	080282 14.49 kg	080283 17.39 kg	080284 20.28 kg	080285 21.15 kg	080286 23.18 kg	080287 28.98 kg	080288 34.77 kg	080932 46.36 kg	080964 57.96 kg	080289 72.44 kg	
DN 400 Weight/pc.	460	080290 15.76 kg	080291 18.91 kg	080292 19.70 kg	080293 23.64 kg	080294 27.58 kg	080295 28.77 kg	080296 31.52 kg	080297 39.41 kg	080298 47.29 kg	080934 63.05 kg	080966 78.81 kg	080299 98.51 kg	
DN 450 Weight/pc.	510	080300 18.08 kg	080301 21.70 kg	080302 22.60 kg	080303 27.12 kg	080304 31.64 kg	080305 33.00 kg	080306 36.16 kg	080307 45.20 kg	080308 54.24 kg	080936 72.33 kg	080968 90.41 kg	080309 113.01 kg	No closure plugs available DN 450 – DN 800
DN 500 Weight/pc.	570	080310 23.70 kg	080311 28.44 kg	080312 29.63 kg	080313 35.56 kg	080314 41.48 kg	080315 43.26 kg	080316 47.41 kg	080317 59.26 kg	080318 71.11 kg	080938 94.82 kg	080970 90.41 kg	080319 148.15 kg	
DN 600 Weight/pc.	670	080320 28.32 kg	080321 33.98 kg	080322 35.39 kg	080323 42.47 kg	080324 49.55 kg	080325 51.67 kg	080326 56.63 kg	080327 70.79 kg	080328 84.94 kg	080940 113.26 kg	080972 141.57 kg	080329 176.97 kg	
DN 700 Weight/pc.	780	080330 38.22 kg	080331 45.86 kg	080332 47.77 kg	080333 57.32 kg	080334 66.88 kg	080335 69.74 kg	080336 76.43 kg	080337 95.54 kg	080338 114.65 kg	080942 152.86 kg	080974 191.08 kg	080339 238.85 kg	
DN 800 Weight/pc.	880	080340 42.17 kg	080341 50.61 kg	080342 52.72 kg	080343 63.26 kg	080344 73.80 kg	080345 76.96 kg	080346 84.35 kg	080347 105.43 kg	080348 126.52 kg	080944 168.69 kg	080976 210.86 kg	080349 263.58 kg	

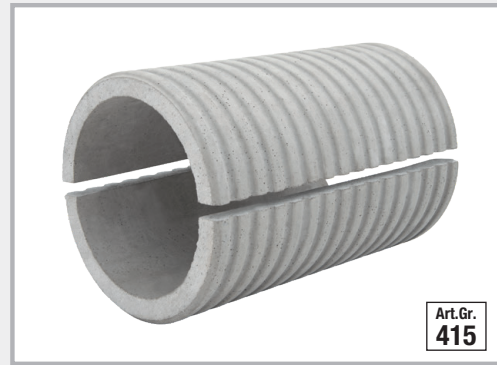
# FASO Lining pipes



## **NEW!** split design

If the media lines have been laid already, the split FASO lining pipes can be retrofitted and glued.

- Against pressurised and non-pressurised water
- Diameters DN 50 to DN 400 immediately available ex stock



FASO split design inner Ø mm	outer Ø mm	Standard lengths										
		200 mm	240 mm	250 mm	300 mm	350 mm	365 mm	400 mm	500 mm	600 mm	800 mm	1000 mm
<b>DN 50</b> Weight/pc.	<b>90</b>	<b>080020T</b> 1.82 kg	<b>080021T</b> 2.18 kg	<b>080022T</b> 2.27 kg	<b>080023T</b> 2.73 kg	<b>080024T</b> 3.18 kg	<b>080025T</b> 3.32 kg	<b>080026T</b> 3.64 kg	<b>080027T</b> 4.55 kg	<b>080028T</b> 5.46 kg	<b>080029T</b> 7.27 kg	<b>080030T</b> 9.09 kg
<b>DN 80</b> Weight/pc.	<b>120</b>	<b>080210T</b> 2.58 kg	<b>080211T</b> 3.09 kg	<b>080212T</b> 3.22 kg	<b>080213T</b> 3.86 kg	<b>080214T</b> 4.51 kg	<b>080215T</b> 4.70 kg	<b>080216T</b> 5.15 kg	<b>080217T</b> 6.44 kg	<b>080218T</b> 7.73 kg	<b>080918T</b> 10.30 kg	<b>080950T</b> 12.88 kg
<b>DN 100</b> Weight/pc.	<b>140</b>	<b>080220T</b> 3.39 kg	<b>080221T</b> 4.07 kg	<b>080222T</b> 4.24 kg	<b>080223T</b> 5.09 kg	<b>080224T</b> 5.94 kg	<b>080225T</b> 6.19 kg	<b>080226T</b> 6.78 kg	<b>080227T</b> 8.48 kg	<b>080228T</b> 10.18 kg	<b>080921T</b> 13.33 kg	<b>080952T</b> 16.96 kg
<b>DN 125</b> Weight/pc.	<b>165</b>	<b>080230T</b> 3.81 kg	<b>080231T</b> 4.57 kg	<b>080232T</b> 4.76 kg	<b>080233T</b> 5.71 kg	<b>080234T</b> 6.66 kg	<b>080235T</b> 6.95 kg	<b>080236T</b> 7.62 kg	<b>080237T</b> 9.52 kg	<b>080238T</b> 11.42 kg	<b>080922T</b> 14.45 kg	<b>080954T</b> 19.04 kg
<b>DN 150</b> Weight/pc.	<b>190</b>	<b>080240T</b> 4.32 kg	<b>080241T</b> 5.18 kg	<b>080242T</b> 5.40 kg	<b>080243T</b> 6.48 kg	<b>080244T</b> 7.56 kg	<b>080245T</b> 7.88 kg	<b>080246T</b> 8.64 kg	<b>080247T</b> 10.80 kg	<b>080248T</b> 12.96 kg	<b>080924T</b> 17.27 kg	<b>080956T</b> 21.59 kg
<b>DN 200</b> Weight/pc.	<b>250</b>	<b>080250T</b> 7.18 kg	<b>080251T</b> 8.62 kg	<b>080252T</b> 8.98 kg	<b>080253T</b> 10.78 kg	<b>080254T</b> 12.57 kg	<b>080255T</b> 13.11 kg	<b>080256T</b> 14.37 kg	<b>080257T</b> 17.96 kg	<b>080258T</b> 21.55 kg	<b>080926T</b> 28.74 kg	<b>080958T</b> 35.92 kg
<b>DN 250</b> Weight/pc.	<b>300</b>	<b>080260T</b> 8.94 kg	<b>080261T</b> 10.73 kg	<b>080262T</b> 11.17 kg	<b>080263T</b> 13.41 kg	<b>080264T</b> 15.64 kg	<b>080265T</b> 16.31 kg	<b>080266T</b> 17.88 kg	<b>080267T</b> 22.35 kg	<b>080268T</b> 26.82 kg	<b>080928T</b> 35.76 kg	<b>080960T</b> 44.70 kg
<b>DN 300</b> Weight/pc.	<b>350</b>	<b>080270T</b> 10.07 kg	<b>080271T</b> 12.09 kg	<b>080272T</b> 12.59 kg	<b>080273T</b> 15.11 kg	<b>080274T</b> 17.63 kg	<b>080275T</b> 18.38 kg	<b>080276T</b> 20.14 kg	<b>080277T</b> 25.18 kg	<b>080278T</b> 30.22 kg	<b>080930T</b> 40.29 kg	<b>080962T</b> 50.36 kg
<b>DN 350</b> Weight/pc.	<b>400</b>	<b>080280T</b> 11.59 kg	<b>080281T</b> 13.91 kg	<b>080282T</b> 14.49 kg	<b>080283T</b> 17.39 kg	<b>080284T</b> 20.28 kg	<b>080285T</b> 21.15 kg	<b>080286T</b> 23.18 kg	<b>080287T</b> 28.98 kg	<b>080288T</b> 34.77 kg	<b>080932T</b> 46.36 kg	<b>080964T</b> 57.96 kg
<b>DN 400</b> Weight/pc.	<b>460</b>	<b>080290T</b> 15.76 kg	<b>080291T</b> 18.91 kg	<b>080292T</b> 19.70 kg	<b>080293T</b> 23.64 kg	<b>080294T</b> 27.58 kg	<b>080295T</b> 28.77 kg	<b>080296T</b> 31.52 kg	<b>080297T</b> 39.41 kg	<b>080298T</b> 47.29 kg	<b>080934T</b> 63.05 kg	<b>080966T</b> 78.81 kg

## Installation



**1.** Place the spacers supplied on the cut surface of the lower shell and apply PROTECT Easy 1K (art. no. 040030) to the cut surface (usage: approx. 150 g/m).



**2.** Place the top shell on the bottom shell and press them together so that the adhesive is pressed out of the joint. Please ensure that the spacers remain in position.

Smooth out the joints inside the lining pipe in order to obtain a clean surface for the possible installation of a gasket insert.

# FASO Lining pipes



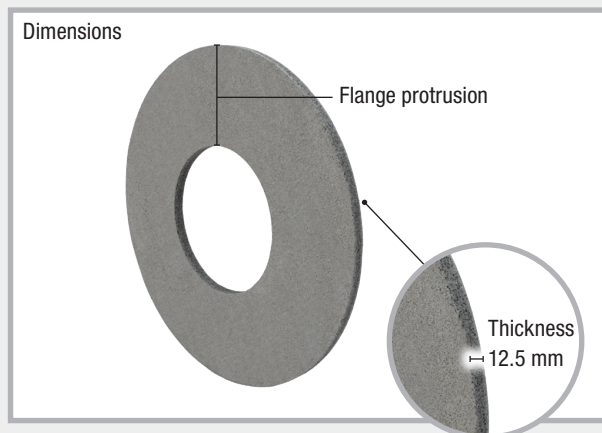
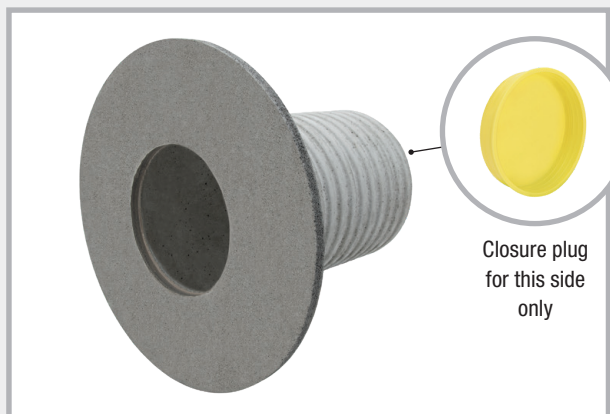
## **NEW!** with mounted flange

- against pressurised and non-pressurised water
- with bonding flange acc. to DIN 18533
- suitable for use with the following waterproofing materials:
  - thick coating
  - all common exterior waterproofing material
  - sealing slurry
  - flexible sheets for concrete waterproofing (FBV)



Art.Gr.  
**407**

Inner Ø mm	Flange Art. no.	Flange dimensions Outer diameter x thickness	Flange protrusion	PU	Weight per pc.	FASO Lining pipe	Closure plugs – please list in your order
DN 50	<b>080815</b>	250 x 12.5 mm	100 mm	1 pc.	0.60 kg	<b>The requested FASO lining pipe must be ordered separately.</b>	
DN 80	<b>080819</b>	250 x 12.5 mm	85 mm	1 pc.	0.55 kg		
DN 100	<b>080821</b>	300 x 12.5 mm	100 mm	1 pc.	0.80 kg		
DN 125	<b>080833</b>	325 x 12.5 mm	100 mm	1 pc.	0.90 kg		
DN 150	<b>080839</b>	350 x 12.5 mm	100 mm	1 pc.	1.00 kg		
DN 200	<b>080843</b>	400 x 12.5 mm	100 mm	1 pc.	1.20 kg		
DN 250	<b>080851</b>	450 x 12.5 mm	100 mm	1 pc.	1.40 kg		
DN 300	<b>080857</b>	500 x 12.5 mm	100 mm	1 pc.	1.60 kg		



The flange is mounted to the requested FASO by MASTERTEC.

## PROTECT Easy 1K



Art.Gr.  
**308**

### Single-component polymer-based concrete adhesive

For water-impermeable bonding of fibre cement distance tubes and lining pipes. Processing takes approx. 20 min. at +23°C;

**Resistant to all normal uncontaminated groundwater.**

Art. no.	Description	PU	Secondary packaging	Weight / aluminium bag
<b>040030</b>	<b>PROTECT Easy 1K</b> 800 g aluminium bag	1 aluminium bag	1 carton = 3 aluminium bags 1 outer carton = 10 cartons	0,80 kg