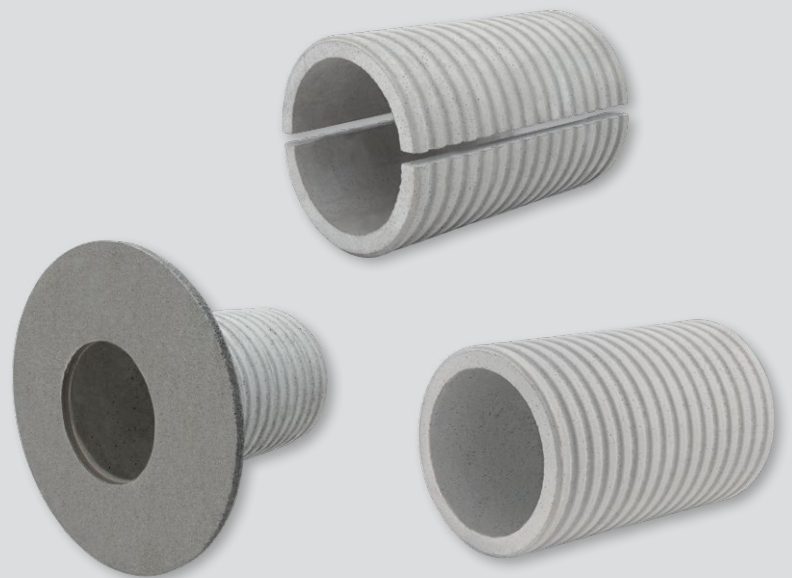




# P R O D U C T R A N G E

PRODUCT GROUP 4

## 2025/2026



# FASO LINING PIPES



# MASTERTEC

SPECIAL ARTICLES FOR REINFORCED CONCRETE CONSTRUCTION

# FASO lining pipe



## Lining pipe made of fibre cement for lead-through of pipes and cables



Building material class A1 – non-flammable

Art.Gr. 405

- Tested based on the German WU directive for Water-Impermeable Concrete Buildings against pressurised water and non-pressurised water
- The external corrugation bonds homogeneously with the concrete and is water-tight. No additional external waterproofing is required.
- Diameter DN 50 to DN 800 immediately available in stock for delivery in all lengths
- Suitable for gasket inserts and modular seals
- DN 50 to DN 800 can be extended up to 1600 mm. We use PROTECT BK 2K (Art. No. 040100) for this purpose.

### Special lengths

- Any intermediate lengths can be supplied.
- DN 50 to DN 400 available for delivery with closure plug, please order separately.
- We will inform you whether delivery is to be made by freight forwarder or courier.

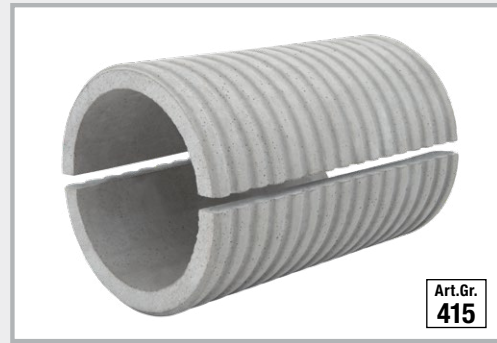
FASO inner Ø mm	outer Ø mm	Standard lengths												Order closure plug or FIX formwork aid separately
		200 mm	240 mm	250 mm	300 mm	350 mm	365 mm	400 mm	500 mm	600 mm	800 mm	1000 mm	1200 mm	
DN 50 Weight/pc.	90	080020 1.82 kg	080021 2.18 kg	080022 2.27 kg	080023 2.73 kg	080024 3.18 kg	080025 3.32 kg	080026 3.64 kg	080027 4.55 kg	080028 5.46 kg	080029 7.27 kg	080030 9.09 kg	080031 10.91 kg	
DN 80 Weight/pc.	120	080210 2.58 kg	080211 3.09 kg	080212 3.22 kg	080213 3.86 kg	080214 4.51 kg	080215 4.70 kg	080216 5.15 kg	080217 6.44 kg	080218 7.73 kg	080918 10.30 kg	080950 12.88 kg	080219 15.46 kg	
DN 100 Weight/pc.	140	080220 3.39 kg	080221 4.07 kg	080222 4.24 kg	080223 5.09 kg	080224 5.94 kg	080225 6.19 kg	080226 6.78 kg	080227 8.48 kg	080228 10.18 kg	080921 13.33 kg	080952 16.96 kg	080229 20.35 kg	
DN 125 Weight/pc.	165	080230 3.81 kg	080231 4.57 kg	080232 4.76 kg	080233 5.71 kg	080234 6.66 kg	080235 6.95 kg	080236 7.62 kg	080237 9.52 kg	080238 11.42 kg	080922 15.45 kg	080954 19.04 kg	080239 22.85 kg	
DN 150 Weight/pc.	190	080240 4.32 kg	080241 5.18 kg	080242 5.40 kg	080243 6.48 kg	080244 7.56 kg	080245 7.88 kg	080246 8.64 kg	080247 10.80 kg	080248 12.96 kg	080924 17.27 kg	080956 21.59 kg	080249 25.91 kg	
DN 200 Weight/pc.	250	080250 7.18 kg	080251 8.62 kg	080252 8.98 kg	080253 10.78 kg	080254 12.57 kg	080255 13.11 kg	080256 14.37 kg	080257 17.96 kg	080258 21.55 kg	080926 28.74 kg	080958 35.92 kg	080259 43.10 kg	
DN 250 Weight/pc.	300	080260 8.94 kg	080261 10.73 kg	080262 11.17 kg	080263 13.41 kg	080264 15.64 kg	080265 16.31 kg	080266 17.88 kg	080267 22.35 kg	080268 26.82 kg	080928 35.76 kg	080960 44.70 kg	080269 53.64 kg	
DN 300 Weight/pc.	350	080270 10.07 kg	080271 12.09 kg	080272 12.59 kg	080273 15.11 kg	080274 17.63 kg	080275 18.38 kg	080276 20.14 kg	080277 25.18 kg	080278 30.22 kg	080930 40.29 kg	080962 50.36 kg	080279 60.43 kg	
DN 350 Weight/pc.	400	080280 11.59 kg	080281 13.91 kg	080282 14.49 kg	080283 17.39 kg	080284 20.28 kg	080285 21.15 kg	080286 23.18 kg	080287 28.98 kg	080288 34.77 kg	080932 46.36 kg	080964 57.96 kg	080289 69.55 kg	
DN 400 Weight/pc.	460	080290 15.76 kg	080291 18.91 kg	080292 19.70 kg	080293 23.64 kg	080294 27.58 kg	080295 28.77 kg	080296 31.52 kg	080297 39.41 kg	080298 47.29 kg	080934 63.05 kg	080966 78.81 kg	080299 94.57 kg	
DN 450 Weight/pc.	510	080300 18.08 kg	080301 21.70 kg	080302 22.60 kg	080303 27.12 kg	080304 31.64 kg	080305 33.00 kg	080306 36.16 kg	080307 45.20 kg	080308 54.24 kg	080936 72.33 kg	080968 90.41 kg	080309 108.49 kg	No closure plug available DN 450 – DN 800
DN 500 Weight/pc.	570	080310 23.70 kg	080311 28.44 kg	080312 29.63 kg	080313 35.56 kg	080314 41.48 kg	080315 43.26 kg	080316 47.41 kg	080317 59.26 kg	080318 71.11 kg	080938 94.82 kg	080970 118.52 kg	080319 142.22 kg	
DN 600 Weight/pc.	670	080320 28.32 kg	080321 33.98 kg	080322 35.39 kg	080323 42.47 kg	080324 49.55 kg	080325 51.67 kg	080326 56.63 kg	080327 70.79 kg	080328 84.94 kg	080940 113.26 kg	080972 141.57 kg	080329 169.88 kg	
DN 700 Weight/pc.	780	080330 38.22 kg	080331 45.86 kg	080332 47.77 kg	080333 57.32 kg	080334 66.88 kg	080335 69.74 kg	080336 76.43 kg	080337 95.54 kg	080338 114.65 kg	080942 152.86 kg	080974 191.08 kg	080339 229.29 kg	
DN 800 Weight/pc.	880	080340 42.17 kg	080341 50.61 kg	080342 52.72 kg	080343 63.26 kg	080344 73.80 kg	080345 76.96 kg	080346 84.35 kg	080347 105.43 kg	080348 126.52 kg	080944 168.69 kg	080976 210.86 kg	080349 253.03 kg	

# FASO lining pipe, split



When media lines have already been laid, the split version FASO lining pipes can be installed and bonded afterwards.

- Against pressurised and non-pressurised water
- Diameters DN 50 to DN 400 available for immediate delivery



FASO split inner Ø mm	outer Ø mm	Standard lengths										
		200 mm	240 mm	250 mm	300 mm	350 mm	365 mm	400 mm	500 mm	600 mm	800 mm	1000 mm
<b>DN 50</b> Weight/pc.	<b>90</b>	<b>080020T</b> 1.82 kg	<b>080021T</b> 2.18 kg	<b>080022T</b> 2.27 kg	<b>080023T</b> 2.73 kg	<b>080024T</b> 3.18 kg	<b>080025T</b> 3.32 kg	<b>080026T</b> 3.64 kg	<b>080027T</b> 4.55 kg	<b>080028T</b> 5.46 kg	<b>080029T</b> 7.27 kg	<b>080030T</b> 9.09 kg
<b>DN 80</b> Weight/pc.	<b>120</b>	<b>080210T</b> 2.58 kg	<b>080211T</b> 3.09 kg	<b>080212T</b> 3.22 kg	<b>080213T</b> 3.86 kg	<b>080214T</b> 4.51 kg	<b>080215T</b> 4.70 kg	<b>080216T</b> 5.15 kg	<b>080217T</b> 6.44 kg	<b>080218T</b> 7.73 kg	<b>080918T</b> 10.30 kg	<b>080950T</b> 12.88 kg
<b>DN 100</b> Weight/pc.	<b>140</b>	<b>080220T</b> 3.39 kg	<b>080221T</b> 4.07 kg	<b>080222T</b> 4.24 kg	<b>080223T</b> 5.09 kg	<b>080224T</b> 5.94 kg	<b>080225T</b> 6.19 kg	<b>080226T</b> 6.78 kg	<b>080227T</b> 8.48 kg	<b>080228T</b> 10.18 kg	<b>080921T</b> 13.33 kg	<b>080952T</b> 16.96 kg
<b>DN 125</b> Weight/pc.	<b>165</b>	<b>080230T</b> 3.81 kg	<b>080231T</b> 4.57 kg	<b>080232T</b> 4.76 kg	<b>080233T</b> 5.71 kg	<b>080234T</b> 6.66 kg	<b>080235T</b> 6.95 kg	<b>080236T</b> 7.62 kg	<b>080237T</b> 9.52 kg	<b>080238T</b> 11.42 kg	<b>080922T</b> 15.45 kg	<b>080954T</b> 19.04 kg
<b>DN 150</b> Weight/pc.	<b>190</b>	<b>080240T</b> 4.32 kg	<b>080241T</b> 5.18 kg	<b>080242T</b> 5.40 kg	<b>080243T</b> 6.48 kg	<b>080244T</b> 7.56 kg	<b>080245T</b> 7.88 kg	<b>080246T</b> 8.64 kg	<b>080247T</b> 10.80 kg	<b>080248T</b> 12.96 kg	<b>080924T</b> 17.27 kg	<b>080956T</b> 21.59 kg
<b>DN 200</b> Weight/pc.	<b>250</b>	<b>080250T</b> 7.18 kg	<b>080251T</b> 8.62 kg	<b>080252T</b> 8.98 kg	<b>080253T</b> 10.78 kg	<b>080254T</b> 12.57 kg	<b>080255T</b> 13.11 kg	<b>080256T</b> 14.37 kg	<b>080257T</b> 17.96 kg	<b>080258T</b> 21.55 kg	<b>080926T</b> 28.74 kg	<b>080958T</b> 35.92 kg
<b>DN 250</b> Weight/pc.	<b>300</b>	<b>080260T</b> 8.94 kg	<b>080261T</b> 10.73 kg	<b>080262T</b> 11.17 kg	<b>080263T</b> 13.41 kg	<b>080264T</b> 15.64 kg	<b>080265T</b> 16.31 kg	<b>080266T</b> 17.88 kg	<b>080267T</b> 22.35 kg	<b>080268T</b> 26.82 kg	<b>080928T</b> 35.76 kg	<b>080960T</b> 44.70 kg
<b>DN 300</b> Weight/pc.	<b>350</b>	<b>080270T</b> 10.07 kg	<b>080271T</b> 12.09 kg	<b>080272T</b> 12.59 kg	<b>080273T</b> 15.11 kg	<b>080274T</b> 17.63 kg	<b>080275T</b> 18.38 kg	<b>080276T</b> 20.14 kg	<b>080277T</b> 25.18 kg	<b>080278T</b> 30.22 kg	<b>080930T</b> 40.29 kg	<b>080962T</b> 50.36 kg
<b>DN 350</b> Weight/pc.	<b>400</b>	<b>080280T</b> 11.59 kg	<b>080281T</b> 13.91 kg	<b>080282T</b> 14.49 kg	<b>080283T</b> 17.39 kg	<b>080284T</b> 20.28 kg	<b>080285T</b> 21.15 kg	<b>080286T</b> 23.18 kg	<b>080287T</b> 28.98 kg	<b>080288T</b> 34.77 kg	<b>080932T</b> 46.36 kg	<b>080964T</b> 57.96 kg
<b>DN 400</b> Weight/pc.	<b>460</b>	<b>080290T</b> 15.76 kg	<b>080291T</b> 18.91 kg	<b>080292T</b> 19.70 kg	<b>080293T</b> 23.64 kg	<b>080294T</b> 27.58 kg	<b>080295T</b> 28.77 kg	<b>080296T</b> 31.52 kg	<b>080297T</b> 39.41 kg	<b>080298T</b> 47.29 kg	<b>080934T</b> 63.05 kg	<b>080966T</b> 78.81 kg



**1.** Place the supplied spacers on the cut edge of the lower shell and apply PROTECT Easy 1K (art. no. 040030) on the cut edges (usage: approx. 150 g/m on both sides). The PROTECT Easy 1K concrete adhesive must be ordered separately.



**2.** Fit the upper shell and press it on so that the adhesive is pressed out of the joint. In the process, you must make sure that the spacers remain in position. Smooth the joints inside the lining pipe in order to achieve a clean surface for possible installation of a gasket insert.



**PROTECT Easy 1K (art. no. 040030)**  
**Single-component polymer-based concrete adhesive**  
For water-tight bonding of split FASO lining pipes. **You will find the adhesive on page 104 in our complete catalogue.**

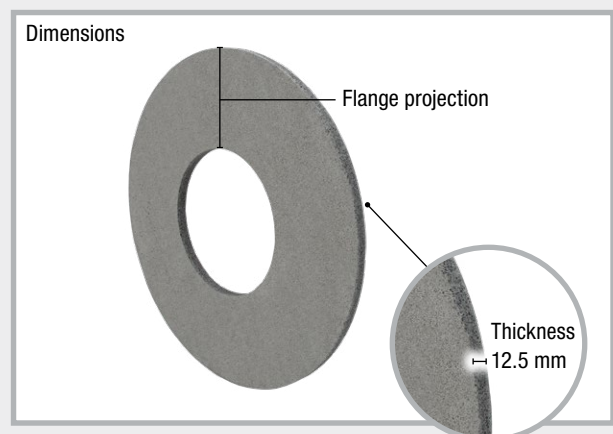
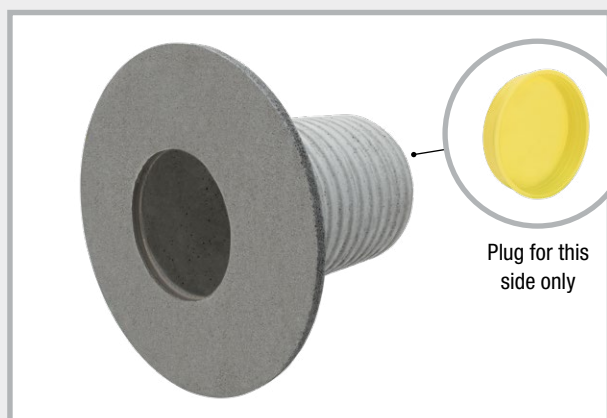


# FASO lining pipe with installed flange



- Against pressurised and non-pressurised water
- With adhesive flange according to DIN 18533
- Can be used in conjunction with the following waterproofing materials:
  - Thick coating
  - All common types of external waterproofing
  - Waterproofing slurries
  - Connection of fresh concrete compound foil (FBV) using liquid plastic

FASO inner Ø mm	Flange dimensions: Outer diameter x thickness	Flange projection mm	Standard lengths									Order closure plug or FIX formwork aid separately
			200 mm	240 mm	250 mm	300 mm	350 mm	365 mm	400 mm	500 mm	600 mm	
<b>DN 50</b> Weight/pc.	250 x 12.5 mm	100	<b>080020F</b> 2.42 kg	<b>080021F</b> 2.78 kg	<b>080022F</b> 2.87 kg	<b>080023F</b> 3.33 kg	<b>080024F</b> 3.78 kg	<b>080025F</b> 3.92 kg	<b>080026F</b> 4.24 kg	<b>080027F</b> 5.15 kg	<b>080028F</b> 6.06 kg	
<b>DN 80</b> Weight/pc.	250 x 12.5 mm	85	<b>080210F</b> 3.13 kg	<b>080211F</b> 3.64 kg	<b>080212F</b> 3.77 kg	<b>080213F</b> 4.41 kg	<b>080214F</b> 5.06 kg	<b>080215F</b> 5.25 kg	<b>080216F</b> 5.70 kg	<b>080217F</b> 6.99 kg	<b>080218F</b> 8.28 kg	
<b>DN 100</b> Weight/pc.	300 x 12.5 mm	100	<b>080220F</b> 4.19 kg	<b>080221F</b> 4.87 kg	<b>080222F</b> 5.04 kg	<b>080223F</b> 5.89 kg	<b>080224F</b> 6.74 kg	<b>080225F</b> 6.99 kg	<b>080226F</b> 7.58 kg	<b>080227F</b> 9.28 kg	<b>080228F</b> 10.98 kg	
<b>DN 125</b> Weight/pc.	325 x 12.5 mm	100	<b>080230F</b> 4.71 kg	<b>080231F</b> 5.47 kg	<b>080232F</b> 5.66 kg	<b>080233F</b> 6.61 kg	<b>080234F</b> 7.56 kg	<b>080235F</b> 7.85 kg	<b>080236F</b> 8.52 kg	<b>080237F</b> 10.42 kg	<b>080238F</b> 12.32 kg	
<b>DN 150</b> Weight/pc.	350 x 12.5 mm	100	<b>080240F</b> 5.32 kg	<b>080241F</b> 6.18 kg	<b>080242F</b> 6.40 kg	<b>080243F</b> 7.48 kg	<b>080244F</b> 8.56 kg	<b>080245F</b> 8.88 kg	<b>080246F</b> 9.64 kg	<b>080247F</b> 11.80 kg	<b>080248F</b> 13.96 kg	
<b>DN 200</b> Weight/pc.	400 x 12.5 mm	100	<b>080250F</b> 8.38 kg	<b>080251F</b> 9.82 kg	<b>080252F</b> 10.18 kg	<b>080253F</b> 11.98 kg	<b>080254F</b> 13.77 kg	<b>080255F</b> 14.31 kg	<b>080256F</b> 15.57 kg	<b>080257F</b> 19.16 kg	<b>080258F</b> 22.75 kg	
<b>DN 250</b> Weight/pc.	450 x 12.5 mm	100	<b>080260F</b> 10.34 kg	<b>080261F</b> 12.13 kg	<b>080262F</b> 12.57 kg	<b>080263F</b> 14.81 kg	<b>080264F</b> 17.04 kg	<b>080265F</b> 17.71 kg	<b>080266F</b> 19.28 kg	<b>080267F</b> 23.75 kg	<b>080268F</b> 28.22 kg	
<b>DN 300</b> Weight/pc.	500 x 12.5 mm	100	<b>080270F</b> 11.67 kg	<b>080271F</b> 13.69 kg	<b>080272F</b> 14.19 kg	<b>080273F</b> 16.71 kg	<b>080274F</b> 19.23 kg	<b>080275F</b> 19.98 kg	<b>080276F</b> 21.74 kg	<b>080277F</b> 26.78 kg	<b>080278F</b> 31.82 kg	



The flange is applied to the desired lining pipe on our premises.

**MASTERTEC GmbH & Co. KG** Special articles for reinforced concrete construction

Im Maintal 13 · 96173 Oberhaid, Germany · Tel. +49 (0) 9503 / 5047-0 · info@mastertec.eu · [www.mastertec.eu](http://www.mastertec.eu)

