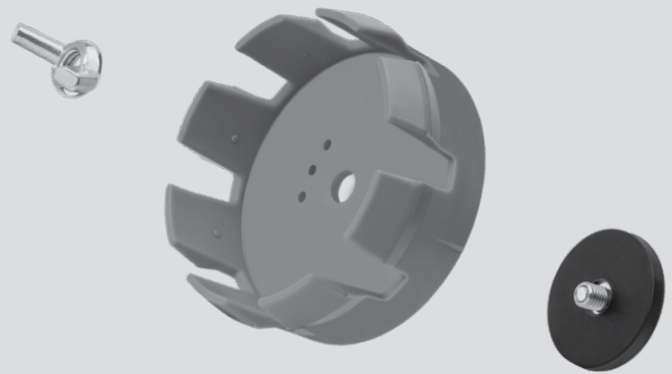




# P R O D U C T R A N G E

**PRODUCT GROUP 4**

# 2025/2026



## **FIX FORMWORK AID**



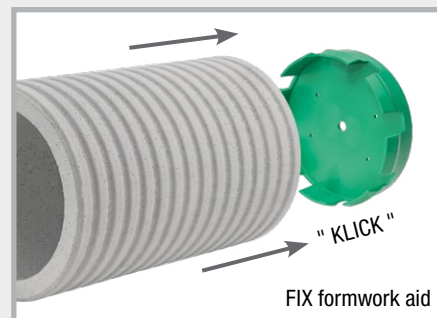
# MASTERTEC

SPECIAL ARTICLES FOR REINFORCED CONCRETE CONSTRUCTION

# FIX formwork aid

Fastening system for lining pipes and fixed earthing terminals at the construction site and at the precast plant

For nailing to wooden and plastic formworks and for fastening to steel formworks using FIX Magnet



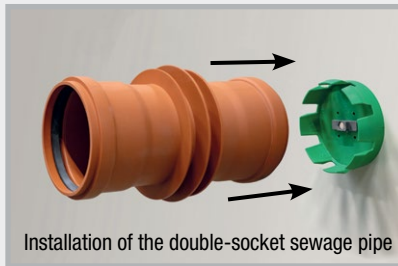
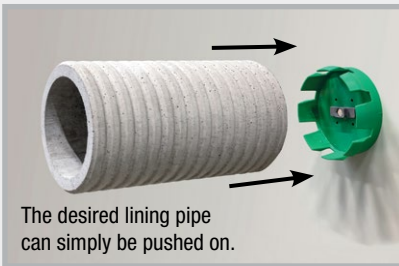
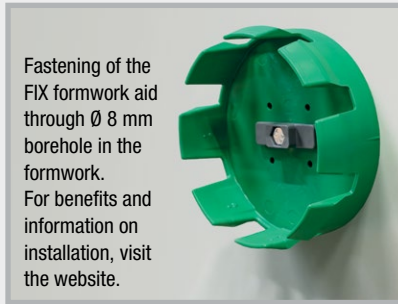
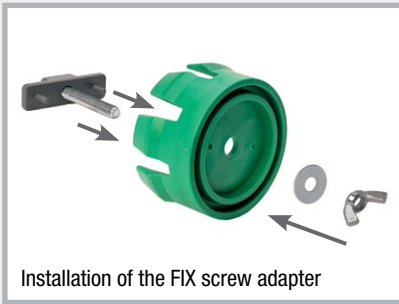
All parts of the FIX formwork range are reusable

Art.Gr.  
**420**

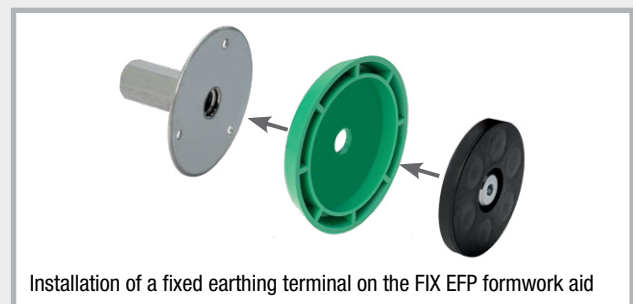
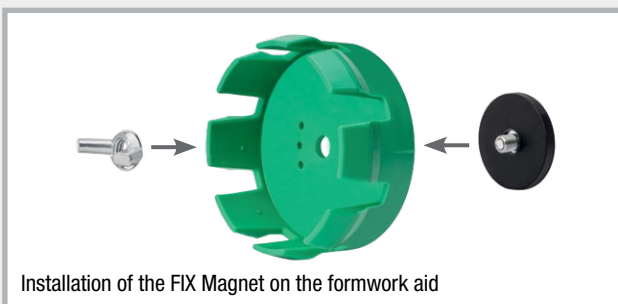
Art. no.	Description	PU	Weight per pc.	
091410	<b>FIX Magnet</b> for formwork aid Power Magnet for all FIX formwork aids, incl. screw and wing nut	25 pcs.	0.14 kg	
090804	<b>FIX EFP formwork aid</b> for fixed earthing terminals M10/12 and M12, cone height 11 mm	25 pcs.	0.03 kg	
090806	<b>FIX 80 formwork aid</b> for lining pipes ID 79-84 mm	25 pcs.	0.10 kg	
090810	<b>FIX 100 formwork aid</b> for lining pipes ID 99-104 mm Sewage pipe DN 110	25 pcs.	0.15 kg	
090814	<b>FIX 110 formwork aid</b> for lining pipes ID 109-114 mm for the socket of KG and KG 2000 sewage pipes DN 110	25 pcs.	0.16 kg	
090816	<b>FIX 125 formwork aid</b> for lining pipes ID 124-129 mm for the socket of KG and KG 2000 sewage pipes DN 125	25 pcs.	0.20 kg	
090818	<b>FIX 150 formwork aid</b> for lining pipes ID 149-154 mm Sewage pipe DN 160	25 pcs.	0.25 kg	
090822	<b>FIX 200 formwork aid</b> for lining pipes ID 199-206 mm	25 pcs.	0.38 kg	
090824	<b>FIX screw adapter incl. screw set</b> The screw adapter allows the FIX formwork aid to be fastened to the formwork shell. In the process, the screw connection is on the outside of the formwork, making stripping the formwork after concreting much easier.	1 set	0.04 kg	
090826	<b>FIX removal aid</b> The removal aid makes pulling out the formwork aid easier	1 pc.	0.08 kg	

# Installation of the FIX formwork aid for all common lining pipes

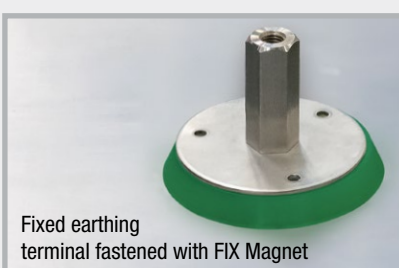
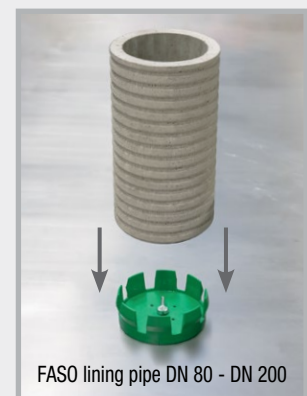
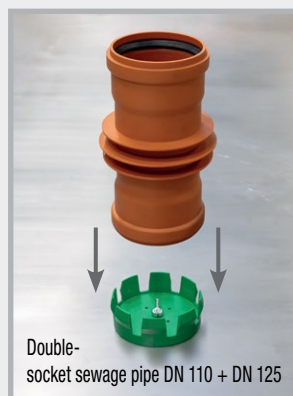
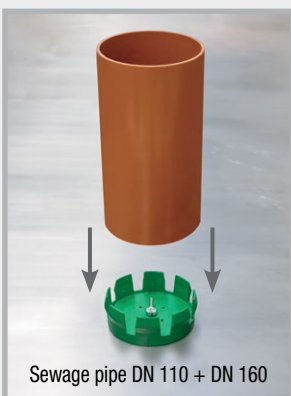
## Wooden or plastic formwork



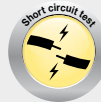
## Steel formwork



Position the FIX formwork aid using the FIX Magnet and simply push on the desired lining pipe.



**NEW!** M12 wall bushings



The M12 wall bushings have a solid 25 mm conductive core and are pre-assembled and supplied in the exact wall thickness. Time-consuming adjustments are not necessary.

Art.Gr. 526



Water pressure-tight wall bushing; M12 threaded connection on both sides; incl. nail adapter for fastening to the formwork



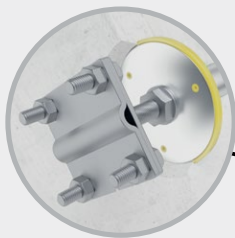
Water pressure-tight wall bushing; M12 threaded connection on both sides with additional connection plate for concrete-laid earthing conductors; incl. nail adapter for fastening to the formwork



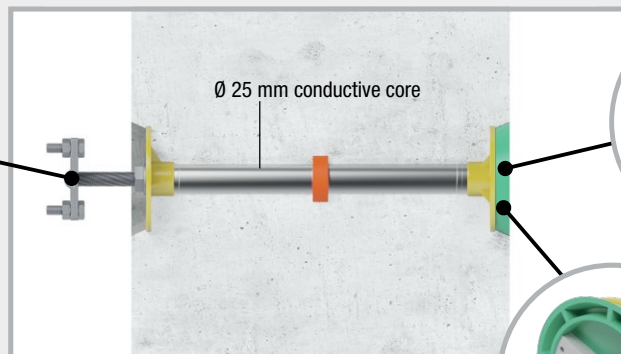
Water pressure-tight, insulated wall bushing; M12 threaded connection on both sides; incl. nail adapter for fastening to the formwork

M12 wall bushings						
Wall thickness mm	Type solo		Type connect		Type iso	
	Art. no.	Weight per pc.	Art. no.	Weight per pc.	Art. no.	Weight per pc.
70	100366	0.42 kg	100366C	0.52 kg	100366I	0.52 kg
80	100367	0.47 kg	100367C	0.57 kg	100367I	0.57 kg
100	100368	0.52 kg	100368C	0.62 kg	100368I	0.62 kg
120	100369	0.60 kg	100369C	0.70 kg	100369I	0.70 kg
150	100371	0.72 kg	100371C	0.82 kg	100371I	0.82 kg
200	100372	0.93 kg	100372C	1.03 kg	100372I	1.03 kg
240	100373	1.09 kg	100373C	1.19 kg	100373I	1.19 kg
250	100374	1.14 kg	100374C	1.24 kg	100374I	1.24 kg
300	100376	1.34 kg	100376C	1.44 kg	100376I	1.44 kg

Art. no.	Description	PU	Weight
100377	Cross clamp for fixed earthing terminal M12, V4A stainless steel, M12 thread, thread length 70 mm, System component for wall bushings solo, connect and iso	1 pc.	0.30 kg

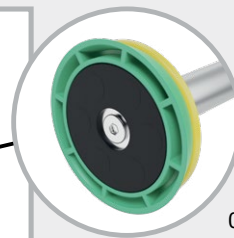


Cross clamp connection option for M12 wall bushings

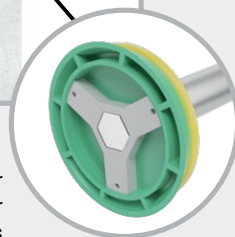


Installation situation water-impermeable concrete wall

Standard nail adapter for fastening to wooden or plastic formwork panels



Can be combined with FIX magnet for fastening to steel formwork or formwork tables in the precast plant (art. No. 091410), not included in the scope of delivery



**MASTERTEC GmbH & Co. KG** Special articles for reinforced concrete construction

Im Maintal 13 · 96173 Oberhaid, Germany · Tel. +49 (0) 9503 / 5047-0 · info@mastertec.eu · www.mastertec.eu

