

Installation tutorial

MASTERSTOP SK Dim: 20 x 5 mm

article number: 010025



[Show product](#)



Productvideo in more languages

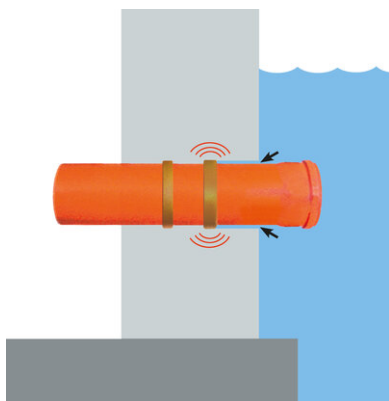


Installation tutorial:



MASTERSTOP SK profiles are always installed inside the reinforcement. In doing so, sufficient concrete cover must be ensured.

The concrete cover should be at least 6 cm as otherwise the high swelling pressure of the bentonite may damage the concrete.



Pull off silicone paper and affix 2 rings of **MASTERSTOP SK** around the pipe to be waterproofed.

The rings must be at least 5 cm apart.

Butt joint ends, no overlaps.

The surface of the pipes must be rigid.



MASTERSTOP SK adheres to metal, plastic, PVC and stone.

Secure **MASTERSTOP SK** with binding wire if necessary.

MASTERSTOP bentonite swelling tape must only be processed when dry in dry weather conditions.

The geometry described must not be modified. Swelling tapes must not be installed if their rectangular geometry has been modified, or if they have become soiled or damaged!

Swelling tapes that have already expanded must not be installed!

Swelling tapes that have been installed and have expanded before placement of the concrete must be replaced!

Basis

All dimensions and information in this data sheet reflect the results of the laboratory tests that have been carried out. Deviations from the values determined by us under laboratory conditions are possible due to environmental and operating conditions beyond our control. The data in this data sheet only applies for the product delivered by us. The product data corresponds only to the specifications in Germany. Possible country-specific deviations are not taken into account here.

Indication of law

The technical information reflects our current knowledge of MASTERSTOP SK Dim: 20 x 5 mm . It is intended only as information for users. As we do not know the envisaged applications and processing conditions, it is the responsibility of the user to carefully check that the product is suitable for the intended purposes. Due to the different components at the installation site and the working conditions in place there, MASTERTEC cannot provide any guarantee whatsoever for the result of the work. Claims arising from any legal relationship can only be recognised in the event of wilful intent or gross negligence, irrespective of the statements made here or advice provided verbally. In this case the user must prove that he has provided MASTERTEC in writing with all the information required to correctly assess the installation situation in good time. Subject to necessary product specifications or further developments. By providing this information MASTERTEC does not intend to infringe third-party rights. The latest data sheet in each case applies. Our corresponding terms and conditions of sale and delivery apply.

The previous data sheets are no longer valid

Printdate 30.12.2020