

Installation tutorial

MasterMastic PU swelling paste 600 ml

Single-component, solvent-free polyurethane-based swelling paste. MasterMastic PU is a swellable sealing compound for waterproofing of concrete construction joints and penetrations. Upon contact with water, the swelling paste expands and seals the joint or penetration reliably and permanently.

article number: 010033



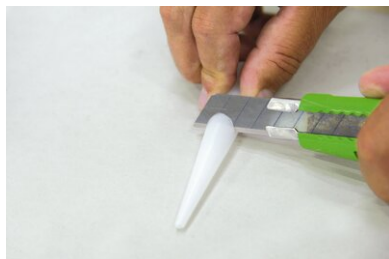
[Show product](#)



Productvideo in more
languages



Installation tutorial:



Preparatory work:

Cutting the cartridge tips:

The use of **MasterMastic PU** swelling paste for construction joints or wall penetrations requires different quantities of applied material.

The area of applied material is regulated by the discharge aperture.

The nozzle is cut off to suit the various areas of application.



The following aperture sizes are necessary:

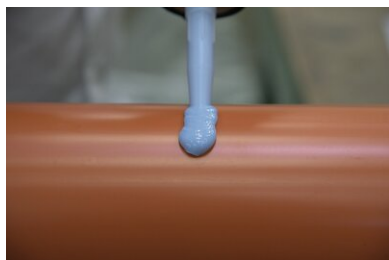
Ø 5-6 mm: Adhesive joints, e.g. swelling tapes

Ø 8-10 mm: Penetrations

Ø 13-15 mm: Construction joints



The combination of the discharge aperture and the usage volume which you can find in the technical datasheet results in the required area of application in order to guarantee professional sealing.



Sealing of penetrations:

MasterMastic PU is applied before installation of the penetration into the formwork.



The installation of the penetration into the formwork starts after complete curing of the **MasterMastic PU** swelling paste.

It must be ensured that the bead of **MasterMastic PU** is inside the two reinforcements with a concrete cover of 8 cm.

Since **MasterMastic PU** is a swelling paste it must be treated like a swelling tape and be protected from rain.

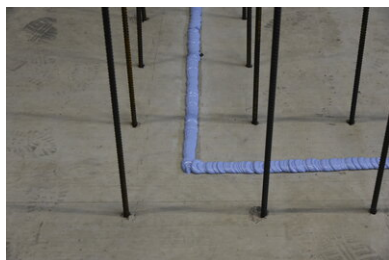


Sealing of construction joints:

After cutting off the nozzle to the necessary discharge aperture **MasterMastic PU** can be applied to the clean substrate.

Apply **MasterMastic PU** with a consistent pressure and a consistent line speed.

The concreting of the building component can only start after complete curing of the **MasterMastic PU**.



It must be ensured that the bead of **MasterMastic PU** is inside the two reinforcements with a concrete cover of 8 cm.

Since **MasterMastic PU** is a swelling paste it must be treated like a swelling tape and be protected from rain.

Accessories

Applicator gun for 600 ml aluminium pouch

professional cartridge gun with ergonomic handle, hardened coupling and push rod, pipe and ring nuts made of aluminium, incl. 3 no...

Nozzle for applicator gun 600 ml

...

Basis

All dimensions and information in this data sheet reflect the results of the laboratory tests that have been carried out. Deviations from the values determined by us under laboratory conditions are possible due to environmental and operating conditions beyond our control. The data in this data sheet only applies for the product delivered by us. The product data corresponds only to the specifications in Germany. Possible country-specific deviations are not taken into account here.

Indication of law

The technical information reflects our current knowledge of MasterMastic PU swelling paste 600 ml . It is intended only as information for users. As we do not know the envisaged applications and processing conditions, it is the responsibility of the user to carefully check that the product is suitable for the intended purposes. Due to the different components at the installation site and the working conditions in place there, MASTERTEC cannot provide any guarantee whatsoever for the result of the work. Claims arising from any legal relationship can only be recognised in the event of wilful intent or gross negligence, irrespective of the statements made here or advice provided verbally. In this case the user must prove that he has provided MASTERTEC in writing with all the information required to correctly assess the installation situation in good time. Subject to necessary product specifications or further developments. By providing this information MASTERTEC does not intend to infringe third-party rights. The latest data sheet in each case applies. Our corresponding terms and conditions of sale and delivery apply.

The previous data sheets are no longer valid

Printdate 30.12.2020