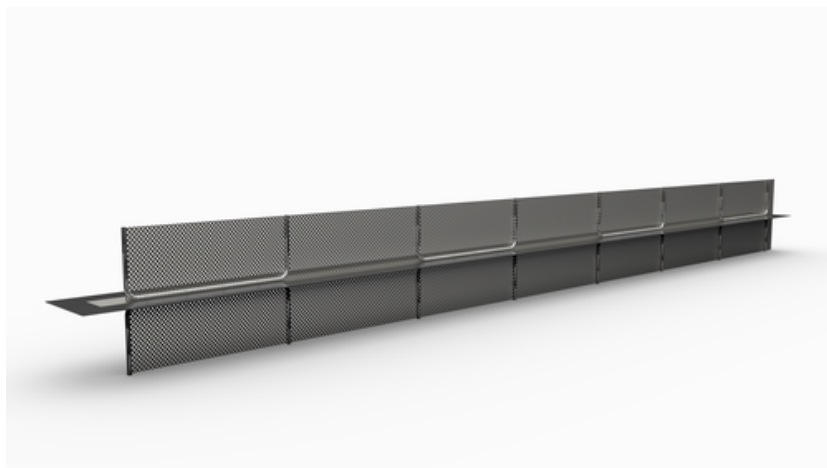


Installation tutorial

Stopend panels for rough joints ABS 400

for wall and foundation shuttering - Typ rough

article number: 070291



[Show product](#)



Installation tutorial:



The **stopend panel joint sheet metal ABS** is positioned between the lower and upper reinforcement layer (foundation – foundation area) or the outer and inner reinforcement layer (wall – wall area).

The perforated plate is fastened to the reinforcement using binding wire.

The individual elements can be pushed into one another, they must overlap by at least 7 cm and the joint must be secured with two fixing clips.

With higher constructional element thicknesses, the **stopend panel joint sheet metal ABS** must also be stiffened in order to be structurally load-bearing.



Before the segment is concreted, the protective foil must be removed from the joint sheet metal.

The protective foil in the section not to be concreted remains on the joint sheet metal.

Once the shuttering for the concrete segment is complete, the segment can be concreted.

The area around the **stopend panel joint sheet metal ABS** must be carefully waterproofed to ensure that the joint sheet metal is fully embedded in the concrete on all sides. Cavities behind the perforated plate must be avoided.



In the second concrete segment, as soon as the protective foil has been removed immediately before concreting, concrete can be placed directly against the stopend panel joint sheet metal ABS.

In this case, the concrete must also be carefully waterproofed in the area of the stopend panel joint sheet metal ABS.

Shrink holes or reinforcement shadow must not form around the joint sheet metal.

The distance between the "installation dimension E" reinforcement is decisive when ordering the stopend panel joint sheet metal ABS

Accessories

ABS deflection profile for

width of perforated plate 400
mm ...

Basis

All dimensions and information in this data sheet reflect the results of the laboratory tests that have been carried out. Deviations from the values determined by us under laboratory conditions are possible due to environmental and operating conditions beyond our control. The data in this data sheet only applies for the product delivered by us. The product data corresponds only to the specifications in Germany. Possible country-specific deviations are not taken into account here.

Indication of law

The technical information reflects our current knowledge of Stopend panels for rough joints ABS 400 . It is intended only as information for users. As we do not know the envisaged applications and processing conditions, it is the responsibility of the user to carefully check that the product is suitable for the intended purposes. Due to the different components at the installation site and the working conditions in place there, MASTERTEC cannot provide any guarantee whatsoever for the result of the work. Claims arising from any legal relationship can only be recognised in the event of wilful intent or gross negligence, irrespective of the statements made here or advice provided verbally. In this case the user must prove that he has provided MASTERTEC in writing with all the information required to correctly assess the installation situation in good time. Subject to necessary product specifications or further developments. By providing this information MASTERTEC does not intend to infringe third-party rights. The latest data sheet in each case applies. Our corresponding terms and conditions of sale and delivery apply.

The previous data sheets are no longer valid

Printdate 30.12.2020