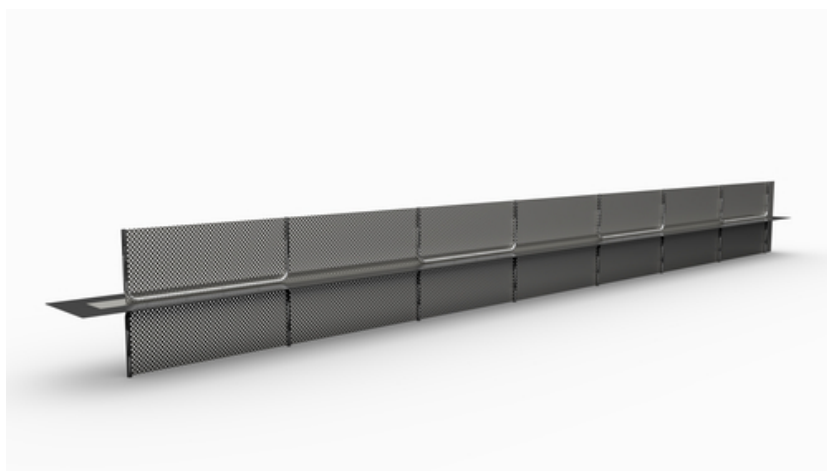


data sheet download

Stopend panels for rough joints ABS 500

for wall and foundation shuttering - Typ rough



[Show product](#)



article number:	070293
GTIN:	4251689511967
customs tariff number:	73269098
packing unit:	pc
sales quantity unit:	2.5 m
weight per:	pc = 10.6 kg
material:	St 37, galvanized special coating: polymer resin fabric-reinforced
colour:	black
length of joint sheet metal:	2.50 m
height of joint sheet metal:	160 mm
width perforated plate:	500 mm
thickness of joint sheet metal:	approx. 0.6 mm
thickness of special coating:	approx. 0.15 mm
total thickness:	approx. 0.9 mm
Test certificate / approval:	Test report PB 5.1/15-425-2 MFPA Leipzig
pressure watertightness:	up to max. 6 bar (60 m water column)
suitable for zones with frequently varying water levels:	yes
corresponds to:	Utility class A for the wear classes 1 and 2 in accordance with the WU guideline
packaging:	On disposable pallets, wrapped in foil
thermal scope of application:	- 20°C to + 90°C
waterpressuretightness:	Up to max. 6 bar (60 m water column)



MASTERTEC

SPEZIALARTIKEL FÜR DEN STAHLBETONBAU

storage:

Store in undamaged and unopened original packaging in a dry place out of direct sunlight.

disposal:

Can be disposed of at municipal waste landfill sites, taking into account the local waste disposal regulations.

Basis

All dimensions and information in this data sheet reflect the results of the laboratory tests that have been carried out. Deviations from the values determined by us under laboratory conditions are possible due to environmental and operating conditions beyond our control. The data in this data sheet only applies for the product delivered by us. The product data corresponds only to the specifications in Germany. Possible country-specific deviations are not taken into account here.

Indication of law

The technical information reflects our current knowledge of Stopend panels for rough joints ABS 500 . It is intended only as information for users. As we do not know the envisaged applications and processing conditions, it is the responsibility of the user to carefully check that the product is suitable for the intended purposes. Due to the different components at the installation site and the working conditions in place there, MASTERTEC cannot provide any guarantee whatsoever for the result of the work. Claims arising from any legal relationship can only be recognised in the event of wilful intent or gross negligence, irrespective of the statements made here or advice provided verbally. In this case the user must prove that he has provided MASTERTEC in writing with all the information required to correctly assess the installation situation in good time. Subject to necessary product specifications or further developments. By providing this information MASTERTEC does not intend to infringe third-party rights. The latest data sheet in each case applies. Our corresponding terms and conditions of sale and delivery apply.

The previous data sheets are no longer valid

Printdate 30.12.2020