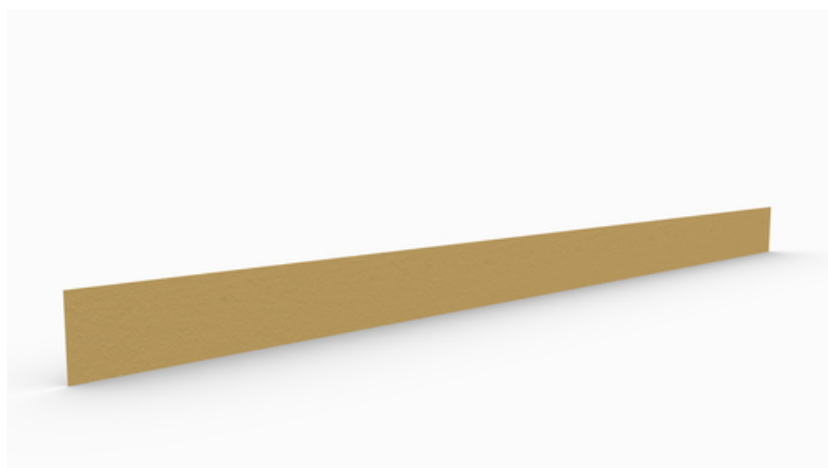


Installation tutorial

Joint sheet metal MB, overlap type, o.O.

full mineral coating on both sides

article number: 070481



[Show product](#)

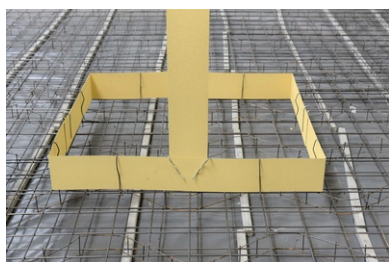


Installation tutorial:



The product is delivered in a wooden crate.

The **Joint sheet metal MB Overlap** elements and the fixing clips are in the crate.



Joint sheet metal MB Overlap elements are supplied ready to install.

A protective foil does not need to be removed.

Place the elements in the centre of the rising wall on top of the upper reinforcement layer.

Push the mounting brackets, 3 pcs/element, over the sheet metal and fix them to the upper reinforcement layer with binding wire.

The embedment depth in the concrete must be at least 3 cm and must not be more than half the height of the sheet metal (8 cm).



The joint of the **Joint sheet metal MB Overlap** can be made without glue, only by overlapping the two ends.

The length of the overlap must be at least 20 cm.

There must be no contamination on the surfaces that could interfere with bonding.



The joint must be secured with one of the fixing clips provided.

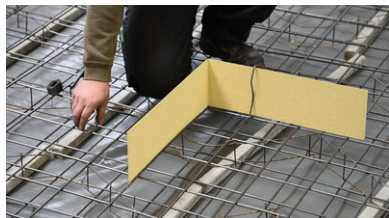
Attention: The Joint sheet metal MB Overlap must not be plugged into the fresh concrete subsequently.



Corners can be formed by sharp-edged bending in-situ on the building site.



After some alignment the edge can be fixed on the reinforcement.



To facilitate the fixing of the **Joint sheet metal MB Overlap** on the reinforcement start installation in a corner.

The placement of concrete in the area of the **Joint sheet metal MB Overlap** and corresponding preparations must be carried out in accordance with the established technical standards.

Status: 23.03.2022

Accessories

Fixing clip h=170 mm

for securing the element joints

...

Omega mounting bracket 160 mm

for coated and uncoated joint metals up to height of 160 mm

...

Basis

All dimensions and information in this data sheet reflect the results of the laboratory tests that have been carried out. Deviations from the values determined by us under laboratory conditions are possible due to environmental and operating conditions beyond our control. The data in this data sheet only applies for the product delivered by us. The product data corresponds only to the specifications in Germany. Possible country-specific deviations are not taken into account here.

Indication of law

The technical information reflects our current knowledge of Joint sheet metal MB, overlap type, o.O.. It is intended only as information for users. As we do not know the envisaged applications and processing conditions, it is the responsibility of the user to carefully check that the product is suitable for the intended purposes. Due to the different components at the installation site and the working conditions in place there, MASTERTEC cannot provide any guarantee whatsoever for the result of the work. Claims arising from any legal relationship can only be recognised in the event of wilful intent or gross negligence, irrespective of the statements made here or advice provided verbally. In this case the user must prove that he has provided MASTERTEC in writing with all the information required to correctly assess the installation situation in good time. Subject to necessary product specifications or further developments. By providing this information MASTERTEC does not intend to infringe third party rights. The latest data sheet in each case applies. Our corresponding terms and conditions of sale and delivery apply.

The previous data sheets are no longer valid

Print date 15.05.2024