

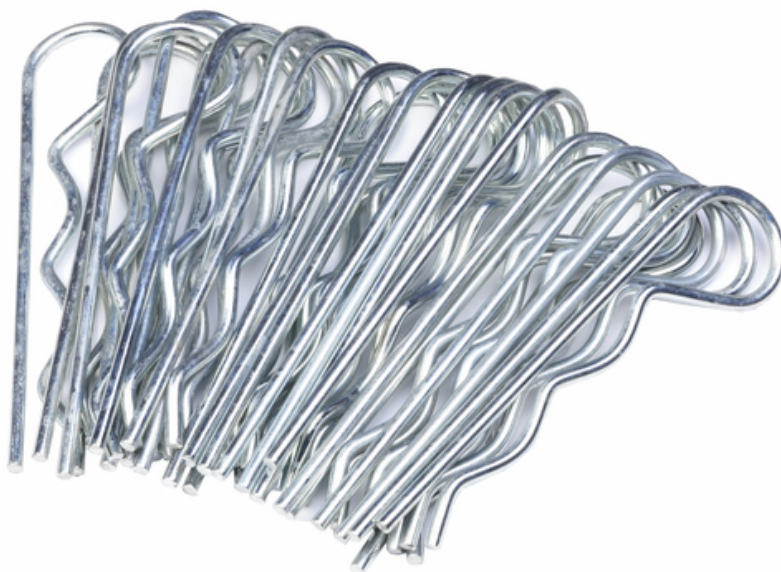
Installation tutorial

MMF 140 Fixing clips

to secure the connections

article number: 080648

[Show product](#)



Installation tutorial:



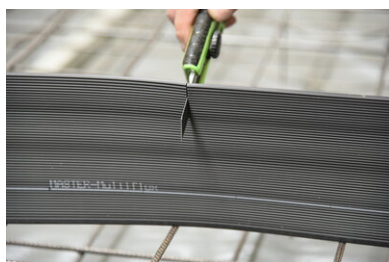
Each carton contains 1 roll of **MASTER-MultiFlex (MMF 140)** and mounting brackets.



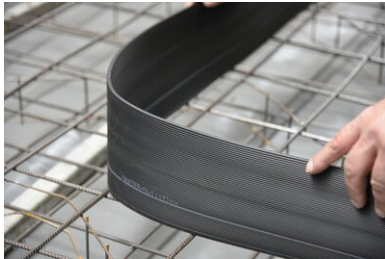
MASTER-MultiFlex (MMF 140) is placed on the upper reinforcement layer in the centre of the rising wall. Place the mounting brackets (2 pcs/m), over the joint tape and fix them with binding wire to the upper reinforcement layer.

The embedment depth in the concrete must be at least 3 cm.

A white marking strip is provided on the **MASTER MultiFlex (MMF 140)** to check the embedment depth.



The **MASTER-MultiFlex (MMF 140)** can be cut to length easily with a cutter.



Due to its material properties, the MASTER-MultiFlex (MMF 140) is stable/ non-sagging but still very flexible. All common geometries can be made.



Closed **MASTER-MultiFlex (MMF 140)** system.



Bonding options:

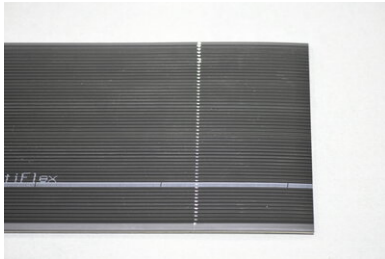
Welding:

For the welding process, the swelling profile can remain in the **MASTER MultiFlex (MMF 140)**.

The corrugations of the **MASTER-MultiFlex (MMF 140)** ends to be joined fit into one another (peak into trough).

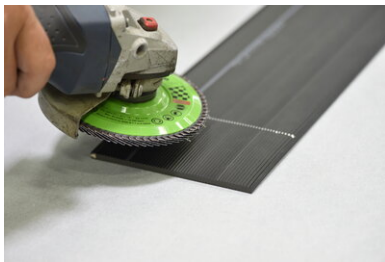


A hot air gun is used to weld the joint tapes together, one below the other, with an overlap of 15 cm.



Adhesive join:

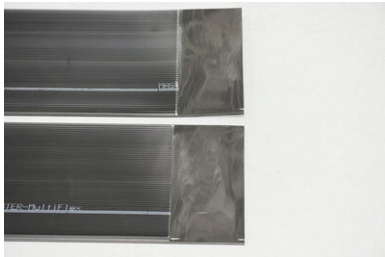
Mark an area of 75 mm on the ends being joined.



Grind down the corrugations in the bonding area with a grinding disk.

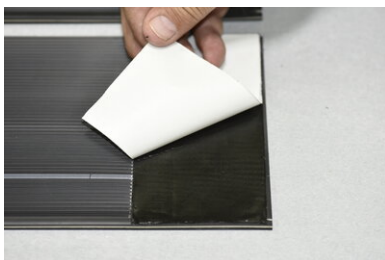
The swelling profile remains in the MASTER-MultiFlex (MMF 140).

Make sure that the smooth flanks on both side of the swelling profile are not ground away.



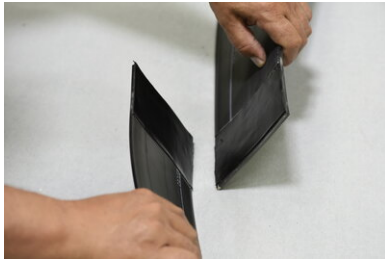
Prepared ends before bonding.

Surfaces free from interfering profile and visible soiling.



Apply the **MMF 140 adhesive tape** (width 75 mm), from the **MMF**

140 adhesive joining kit, on one side of **Master-Multiflex (MMF 140)** and remove the backing.



Press both ends, one prepared with **MMF 140 adhesive tape**, one without adhesive tape, together and bond them.



The join area must be secured with the **MMF 140 fixing clip**.



Secured joint tape with bonded joint.



Screwed connection:

The connection of two **MASTER-MultiFlex (MMF 140)** ends can also be made quickly and securely with an **MMF 140 MASTERConnect "active"**.



The two ends of **MASTER-MultiFlex (MMF 140)** are - without prior processings - inserted into the **MMF 140 MASTER-Connect „active“** on the left and right up to the screws, the screws are tightened to approximately 8 Nm.



Secured joint tape with **MMF 140 MASTER-Connect „active“**



Connection of SRF 125 crack-inducing profiles:

Use a grinding wheel to grind down the corrugation in the area in which you wish to attach the crack-inducing profile. The area to be ground must have a size of at least 160 x 75 mm.



Apply the **MMF 140 adhesive tape** on the prepared surface. Remove the backing before bonding with the crack-inducing profile.



Bond the crack-inducing profile with the prepared surface of **MASTER-MultiFlex (MMF 140)** on the water-facing side.

The bonding area must additionally be secured with 2 fixing clips.

Basis

All dimensions and information in this data sheet reflect the results of the laboratory tests that have been carried out. Deviations from the values determined by us under laboratory conditions are possible due to environmental and operating conditions beyond our control. The data in this data sheet only applies for the product delivered by us. The product data corresponds only to the specifications in Germany. Possible country-specific deviations are not taken into account here.

Indication of law

The technical information reflects our current knowledge of MMF 140 Fixing clips . It is intended only as information for users. As we do not know the envisaged applications and processing conditions, it is the responsibility of the user to carefully check that the product is suitable for the intended purposes. Due to the different components at the installation site and the working conditions in place there, MASTERTEC cannot provide any guarantee whatsoever for the result of the work. Claims arising from any legal relationship can only be recognised in the event of wilful intent or gross negligence, irrespective of the statements made here or advice provided verbally. In this case the user must prove that he has provided MASTERTEC in writing with all the information required to correctly assess the installation situation in good time. Subject to necessary product specifications or further developments. By providing this information MASTERTEC does not intend to infringe third-party rights. The latest data sheet in each case applies. Our corresponding terms and conditions of sale and delivery apply.

The previous data sheets are no longer valid

Printdate 30.12.2020