

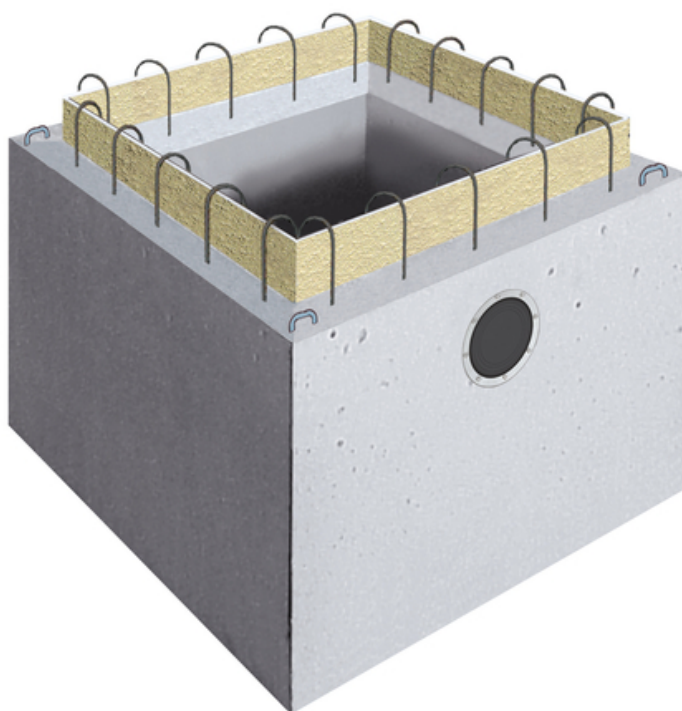
data sheet download

PiLO-pump sump Multi W 100 x L 100 x H 80 cm

of water-impermeable concrete C35/45



[Show product](#)



article number:	090454
GTIN:	4251689531767
customs tariff number:	68109190
packing unit:	pc
sales quantity unit:	1 Stk
weight per:	pc = 1640 kg
material:	of water-impermeable concrete C35/45
colour:	grey
wall thickness:	12 cm
reinforcement connection:	8/15
joint sealing:	watertight connection thanks to use of joint sheet metal MB (MPA-tested joint sheet metal)
connection with:	MASTER-RING Multi 200
	You can connect pipes with an outer diameter of 110, 125, 140 or 160 mm.
water pressure tight:	according to DIN 4281 - 08.1998
concrete quality:	water-impermeable concrete C 35/45
Dimensions:	inner dimension 100 x 100 x 80 cm cm - Lenght x width x height outer dimension 124 x 124 x 92 cm - Lenght x width x height

Basis

All dimensions and information in this data sheet reflect the results of the laboratory tests that have been carried out. Deviations from the values determined by us under laboratory conditions are possible due to environmental and operating conditions beyond our control. The data in this data sheet only applies for the product delivered by us. The product data corresponds only to the specifications in Germany. Possible country-specific deviations are not taken into account here.

Indication of law

The technical information reflects our current knowledge of PILO-pump sump Multi W 100 x L 100 x H 80 cm . It is intended only as information for users. As we do not know the envisaged applications and processing conditions, it is the responsibility of the user to carefully check that the product is suitable for the intended purposes. Due to the different components at the installation site and the working conditions in place there, MASTERTEC cannot provide any guarantee whatsoever for the result of the work. Claims arising from any legal relationship can only be recognised in the event of wilful intent or gross negligence, irrespective of the statements made here or advice provided verbally. In this case the user must prove that he has provided MASTERTEC in writing with all the information required to correctly assess the installation situation in good time. Subject to necessary product specifications or further developments. By providing this information MASTERTEC does not intend to infringe third-party rights. The latest data sheet in each case applies. Our corresponding terms and conditions of sale and delivery apply.

The previous data sheets are no longer valid

Printdate 31.12.2020