

# Installation tutorial

## RONDO PROTECT sealing collar RO 170

The sealing collar with maximum media and pressure resistance

article number: 091238



[Show product](#)



# Installation tutorial:

The **RONDO Protect Sealing collar** is supplied ready-to-install with two stainless-steel clamping straps for fixing.



Soiled pipe walls must be cleaned prior to attaching the **RONDO Protect Sealing collar**.



The **RONDO Protect Sealing collar** is even easier to install if placed in hot water beforehand (10 minutes).

Push the **RONDO Protect Sealing collar** onto the end of the pipe and slide along before the pipe is installed.



The **RONDO Protect Sealing collar** should be mounted centrally on the wall/floor plate.

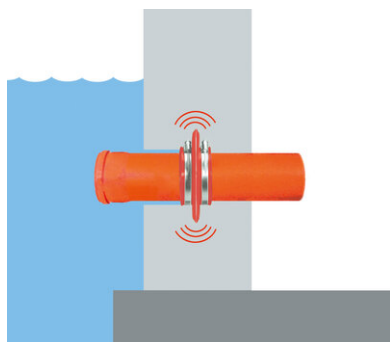
Always ensure a minimum concrete covering of 5 cm.

The distance to the surrounding reinforcement or other components must be at least 3 cm.



Use a screwdriver to tighten the clamping straps sufficiently to prevent the **RONDO Protect Sealing collar** from shifting during concreting.

During concreting, ensure thorough sealing around the **RONDO Protect Sealing collar** in order to prevent defects/rock pockets.



Der **RONDO Protect Sealing collar** is placed in center of the concrete element.

It prevents liquid and gas from penetrating the structure along the pipe's outer wall.

## **Basis**

All dimensions and information in this data sheet reflect the results of the laboratory tests that have been carried out. Deviations from the values determined by us under laboratory conditions are possible due to environmental and operating conditions beyond our control. The data in this data sheet only applies for the product delivered by us. The product data corresponds only to the specifications in Germany. Possible country-specific deviations are not taken into account here.

## **Indication of law**

The technical information reflects our current knowledge of RONDO PROTECT sealing collar RO 170 . It is intended only as information for users. As we do not know the envisaged applications and processing conditions, it is the responsibility of the user to carefully check that the product is suitable for the intended purposes. Due to the different components at the installation site and the working conditions in place there, MASTERTEC cannot provide any guarantee whatsoever for the result of the work. Claims arising from any legal relationship can only be recognised in the event of wilful intent or gross negligence, irrespective of the statements made here or advice provided verbally. In this case the user must prove that he has provided MASTERTEC in writing with all the information required to correctly assess the installation situation in good time. Subject to necessary product specifications or further developments. By providing this information MASTERTEC does not intend to infringe third-party rights. The latest data sheet in each case applies. Our corresponding terms and conditions of sale and delivery apply.

## **The previous data sheets are no longer valid**

Printdate 31.12.2020